



GOING PLACES



Columbus MARC Region Since 1964, MAFCA Chapter since 2009

www.modelacolumbus.org

Upcoming Events

Board has decided to cancel membership meetings and tours through March. We will continue to evaluate the pandemic situation for April activities.

Stay tuned!

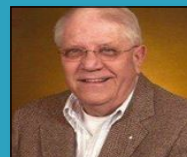
March 2021 Edition

"Worry is the most wasteful thing in the world."

-Henry Ford
American Magazine
February 1936

President's Report

By Ron Lawson



Hello Membership!

There are two aspects to this hobby; the technical and social with the social part a lot of fun. To the technical, we have a few roadside seminars. We learn a lot from the roadside seminars.

We want to start thinking about tours and events for this year. The board will be meeting soon to put together an itinerary. If you have a suggestion, contact a club officer so we can add it to the list.

Mary Matthews (Katie) was in the hospital January 5 to the 15. She had acute ischemic stroke. She is home now and doing fine.

Unfortunately, the MARC Membership Meet in April has been CANCELLED. However, the 2021 MARC National Meet at Oshkosh is still on. In the January/February Model "A" News it has the registration form. This is going to be a fun meet. Plan your events at the meet and get that registration mailed in. Let Phil Sutton know if you are going because he has plans for some fun stuff. Phil always does.

Drive slow, stop often! There is a lot to see and do when we do this!

See ya on the Road— Ron



Dear MARC members and families,

It is with great sadness that Script A's regret to inform you that the 2021 MARC Membership Meet has been **cancelled**. There were several logistical reasons for the decision but the bottom line is the Covid-19 virus. We, and the MARC Board, cannot guarantee the safety of 200+ people, ensuring social distancing and masking. Currently Michigan has a 25% capacity for area restaurants and small businesses. Some of our Self-guided venues are also currently closed. We simply cannot predict how "business" can be conducted in April. Our committee would like to reschedule this event for April 2023.

If you have already sent in your registrations, these and your check will be returned.

- Each member **MUST** cancel their own hotel reservations for the DoubleTree Hotel – 989-891-6000.
- The Comfort Inn – 989-892-3501, will cancel all their reservations and notify those guests.
- Courtyard by Marriott, please call them and cancel. 989-778-1800.
-

Sincerely Curt & Wendy Hillman and The Script A's

A Membership Minute

The Board met on February 16th via Zoom. Here are the highlights:

Membership Meetings: These will continue to be postponed through March. Sirloin Stockade is now completely closed. We will need to find a new location to hold the meetings. Larry did contact Bakalar Airport, but this is cost prohibitive. Most restaurants/ places have occupancy restrictions currently, but we need to plan for a post pandemic location. If you have an idea, please contact someone from the Board. So, in the meantime, we will continue to use this newsletter as communication to the membership. The Board still wants to hear from you, so please reach out to any Board member if you have a topic to discuss.

Tours: At the March Board meeting, we will draft a 2021 tour schedule. Phil does have some ideas already and we will 'dust off' the cancelled 2020 tour schedule for ideas. We are always open to tour ideas, so if you have one, please let the Board or Phil know.

Swap Meet: As of now, we are still planning on holding the swap meet, but are monitoring this closely. The swap meet is not only a major fund raiser for the club, but also a great time to catch up with some long time friends. We want to ensure we are taking everything into consideration. Larry has been in contact with the Fair Board as well as some vendors. So far we feel we can hold this safely. There may be some indoor occupancy restrictions, but these should be manageable. Stay tuned.

Health Report: Katie was in the hospital January 5th to the 15th. She had acute ischemic stroke. She is home now and doing fine.

MARC National Meet: Please let Phil Sutton know if you are planning on attending the MARC National Meet in June. He will be planning a trip around the event and would like to know how many people will be going.

Treasurer's Report as of February 18th:

Starting Balance = \$1,442.55

Income:

Dues = \$210

Swap Meet = \$14

Total Income = \$224

Expenses:

Newsletter = \$19.24

Total Expenses = \$19.24

Ending Balance = \$1,641.31

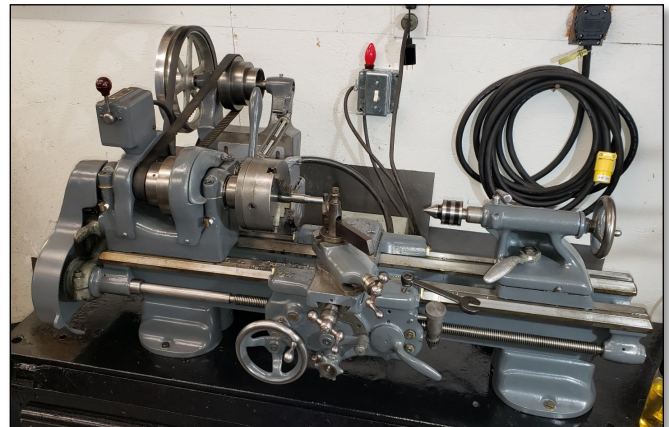
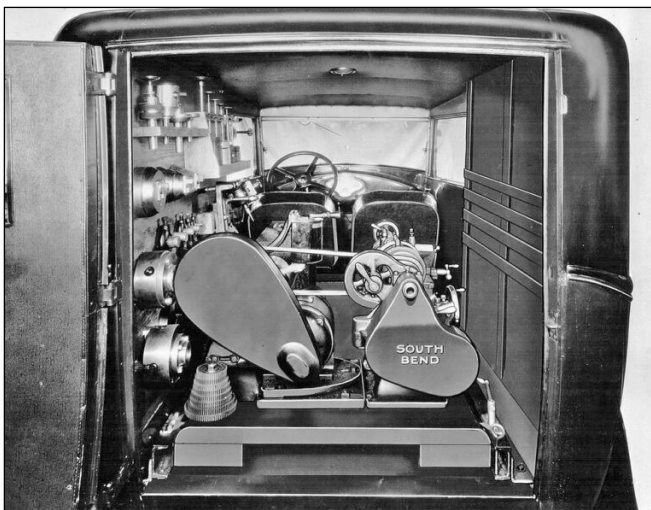
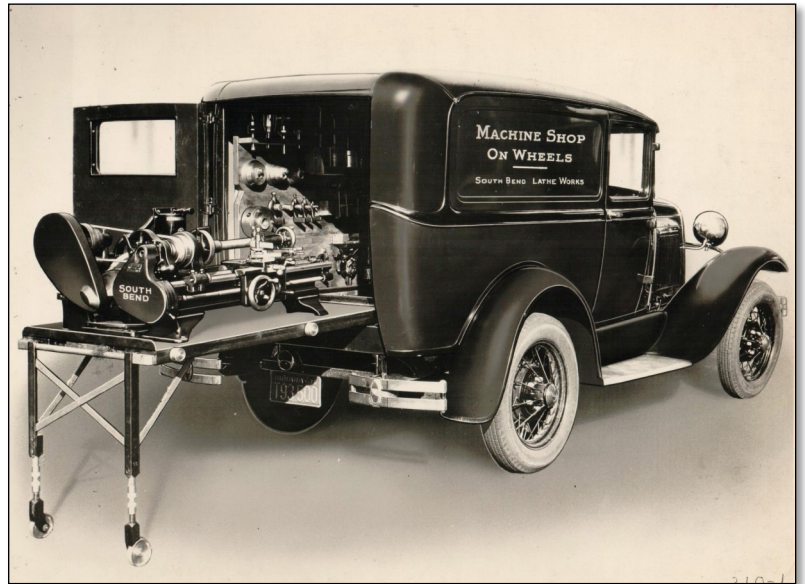
Next Board Meeting: March 9th, 8pm via Zoom

FROM THE EDITOR

As I have said in a previous newsletter, I subscribe to some daily and weekly internet blogs featuring the collector car hobby. I was particularly excited with a recent post on [The Old Motor about a 1931 Model A Delivery Truck](#). Not only a cool truck, but mounted inside was a South Bend lathe for a traveling salesman to show off at workshops. I am a new owner of a 1947 9" South Bend Model B, so the article really caught my attention for a couple reasons.

During the '30's and '40's, South Bend Lathe (SBL) produced nearly half of the lathes in the US. During WWII, they were an important supplier to the War Department producing essential items for the war effort. In fact during that time, SBL was controlled by the War Production Board who closely controlled and allocated American production. Lathes produced during this time had a tag that read "This Machine Conforms to the Orders of the War Production Board". Founders and brothers, the Irish twins, John and Miles O'Brien had encounters with Thomas Edison early in their careers, much like Henry Ford. Miles briefly worked for Thomas Edison at the Edison Phonograph Company in New Jersey in the 1890's. Mr. Edison suggested both boys round out their machining experience with engineering courses; so off they went to Purdue to get engineering degrees. Then, in 1906, they started the South Bend Machine Tool Company in South Bend, IN. Eventually, they changed the name to South Bend Lathe. The [SBL brand](#) still lives today under the larger Grizzly Industrial company in Bellingham, WA.

Tim Diehn, Newsletter Editor



(My SBL freshly restored!)

Wandering Indiana in a Model A

By Jack and Linda Sullivan

By April several Model A events we had planned to attend in 2020 had been cancelled. Trips we were planning on our own did not seem like a good idea during a pandemic. The thought of not driving our Model A was something we did not want to accept. But how could we do it and still be safe from COVID-19?

One day we were exploring the backroads of Crawford County looking for lady's slippers and found ourselves at O'Bannon Woods State Park. It had picnic tables along the Ohio River and lots of hiking trails. It was a great place to visit. On our way home a plan for our summer started to take shape. We could visit the twenty-four state parks in Indiana. It would be relatively easy to stay safe. We would take a picnic, hike, and enjoy the Model A. All at the bargain price of \$25 for a Golden Hoosier Passport, if you are a Hoosier and over sixty-five.



The next Wednesday with a picnic in the rumble seat, hand sanitizer, and face masks we headed for Spring Mill. The restored village is outstanding and always brings back memories of visits when we were children.

Within the next three weeks we added Charleston State Park and enjoyed learning about Rose Island, a 1920's amusement park. McCormick's Creek State Park with its spectacular limestone canyon views was a perfect place for lunch. At Shakamak State Park we hiked along Shakamak Lake and at Versailles State Park we hiked along Laughery Creek. Friends joined us for

a hike to the waterfalls at Clifty Falls State Park.

Trying to find a time to visit Fort Harrison State Park without a lot of Indianapolis traffic was challenging. We hoped July 4th would work, and it did. The traffic was not bad. There were a lot of people at the park, but we found a table by itself. The trail along Fall Creek did not have that many people, and it was a good trail for birding.

When we decided to go to Whitewater Memorial State Park, we had no idea we were picking such a beautiful day. The roadsides in the park were full of native wildflowers and bluebird boxes. At lunch we were entertained by a pair of bluebirds tending their nest.

We used our house in Orange County as a starting point for several of our trips. It made Harmonie, Lincoln and The Falls of the Ohio State Parks easier day trips. Each of these parks offered different but exceptional hikes. We enjoyed hikes along the Wabash River, Mr. Lincoln's Neighborhood, and the fascinating fossil beds.

The northern parks obviously could not be day trips, so we rented a house on Lake of the Woods near Plymouth to serve as our hub. Not comfortable dining out, we packed our groceries, clothes and of course spare parts and headed north. The first park on our trip was Prophetstown located just north of West Lafayette. It is Indiana's newest park. We loved walking through the tallgrass prairie restoration with wildflowers among the grasses. There is a small working farm within the park, and we decided to visit it. While there we realized a storm was coming, so we hurried back to the car and got the top up just in time for a downpour. Moments later the tornado sirens started. It was a scary few minutes but other than getting wet, which is nothing new to us, everything was fine.

Continued on next page.



Continued from previous page

The next day we visited Potato Creek and Tippecanoe River State Parks. Both first time visits for us. Our hike at Potato Creek was filled with wildflowers and at Tippecanoe River mosquitoes. Wednesday was beach day! Indiana Dunes State Park is Indiana's own bit of beach paradise. With blue skies and warm water, walking along the beach was wonderful. Chain O'Lakes was our first park on Thursday. With nine connecting lakes, it is a park that makes you want to rent a canoe. A couple of interesting trails left us ready to go back to explore more of the park. Next was Pokagon State Park. It is known for its toboggan run, but it has a lot to offer summer visitors as well. A hike along Lake James was a great way to end the day. On our way home Friday, we stopped at Ouabache State Park and enjoyed the trail around Kunkel Lake. Ouabache is the Miami Indian word for Walbash, the river that forms the southwest boundary of the park, reminding us that the river not only forms part of Indiana's western state line but crosses the state.

Another trip that needed to be an overnigher was Turkey Run and Shades State Parks. A Holiday Inn Express at Crawfordsville helped make this a three day trip. At Turkey Run you can wonder if you are still in Indiana. We love the trails with canyons and streams. Also, on a sentimental note this was a favorite camping spot with our children. Ten miles away is Shades State Park which has many of the same geological features of Turkey Run but less people. Our favorite trail goes by Devil's Punch Bowl. This is such a pretty area that we went back in the fall and did the covered bridge driving routes.

No fall in Indiana would be complete without a trip to Brown County State Park. The fall colors did not disappoint us. The views from the vistas were spectacular.

With only two parks left, we planned a trip to Anderson to visit Mounds State Park. My sister, Loretta, and her husband, Jerry, live across from the park and joined us. Loretta arranged a tour with the



naturalist to the "Great Mound" one of the ten mounds in the park. The mound was built around 160 B.C. by the Adena and Hopewell cultures. Research indicates the mounds were used to track the seasons, positions of stars, and planets.



On our way back to Seymour, we stopped at Summit Lake for a short visit and celebrated checking off all twenty-four Indiana State Parks.

It was an amazing summer revisiting parks and exploring parks new to us. We are already planning on going back to some of the parks this summer and encourage you to do the same. They say if you are in Indiana, you are within an hour of a state park. Or maybe an hour and a half in a Model A.

When we told friends about our travels last summer, the two questions we were asked most were, "Did you have any car trouble?" and "What is your favorite park?" Our only trouble was the points closed, and our car would not start one morning at Lake of the Woods. As for our favorite we narrowed it down to five: Brown Country, Turkey Run, Spring Mill, Indiana Dunes and Clifty Falls.

Last summer we drove our 1929 roadster over 8,000 miles. Not all of those miles were going to Indiana State Parks but with the exception of two trips to Bedford, Kentucky to buy peaches, they were all in Indiana. It was definitely a "Wander Indiana" year for us.

Final Approach—My Pietenpol Heads to the Museum

By Larry Morlock

Several of us in the Model A Club had a couple of fun days recently moving my Model A powered Pietenpol airplane up to the NATMUS Museum in Auburn, IN, the National Automotive and Truck Museum of the United States.

I built the Pietenpol over a period of 25 years (stay tuned, story next month!) and by the time I finished it in 2018 my flying days were over, so I donated it to MAFFI, the Model A Ford Foundation, Inc. They already



have a Pietenpol in their museum at the Gilmore complex in Hickory Grove, MI, and no more room, so it ended



up at the NATMUS museum. MAFFI has a working relationship with NATMUS to store their excess Model A inventory, so my Pietenpol has a lot of Model A vehicles for company in Auburn.

The [Pietenpol Air Camper](#) airplane was designed by Bernard Pietenpol in 1929 in Cherry Grove, MN. Mr. Pietenpol only had an 8th grade education, but was very inventive (much like our own Clessie Cummins) and had a passion to fly. He did this on a limited budget, which is one reason why he chose the Ford Model A engine as the power plant. He only built two dozen airplanes himself but sold the plans and parts for years. [His aircraft was so successful that it has been built by homebuilders to this day.](#)

My Pietenpol has a large one-piece wing that is 28 ft. long, so I had to remove the wing and transport it separately from the fuselage. On Saturday, Nov 6, Mike Baker was kind enough to



use his covered car trailer and pick-up to take the fuselage up to Auburn, accompanied by Ed Dathe, Phil Sutton and myself. Mike's trailer was just large enough to accommodate the wide tail on the plane, but we have to remove the radiator to get it in. We had good weather and everything went off without a problem. We had time to visit the [cut-away Model A chassis](#) that Ed built and is also in the NATMUS museum, plus a stop on the way back at the Model A Restaurant in Indy.



Continued on next page.

Continued from previous page

Transporting the wing was quite another matter. Due to its size, we could not find a truck large enough, so I borrowed a pontoon boat trailer from a friend who runs a marine business. The trailer was 4 ft wide and 24 ft. long to fit between the pontoons, so it was perfect for my Pietenpol wing.

This time I was accompanied by Doug Eckart and Mike Foushee, my flying buddies, using Joe Cunningham's pick-up to pull the rig. This was Nov 12, another day of good weather. I was approaching this one with some trepidation, as I was not sure how we would hold the wing up to re-assemble it to the fuselage. We took along two chain hoists, which was the way we removed the wing, but I



could envision us taking a lot of time to attach the hoists to the rafters, lift the wing, attach it, get them back down, etc. To my surprise and great pleasure, when we arrived at NATMUS, they had arranged for half a dozen volunteers (old guys like me) who carried the wing into the museum, hoisted it on their backs and held it there while we put in the mounting bolts. The whole process

took about 30 minutes! After a great lunch at Sandra D's, we had time to finish the wing details, take a tour of the museum and get back to Columbus by 6:00pm. What a day!

The Pietenpol is now happily living next to a Model A Postal truck in the museum. So, if you are ever in or around Auburn, IN, a visit to the [NATMUS](#) and [Auburn/Cord/Deussenberg](#) museums is well worth the time.





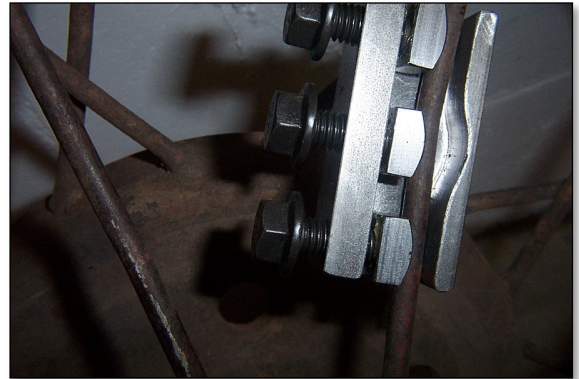
'What Is It?' Challenge

Answer to last Month's Challenge



Spoke Straightening Tool Set.

When repairing old spoke wheels, these handy tools make spoke straightening a breeze! They can be purchased at your favorite Model A supplier.



This Month's Challenge

What is it and what is it used for?



A MAFCA Tiny Tip!

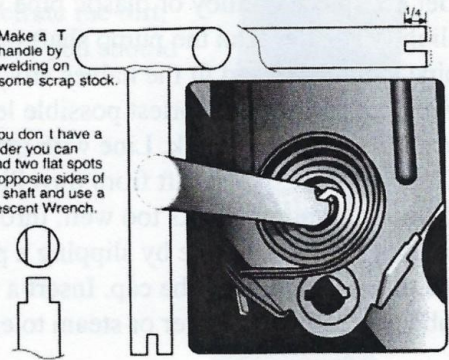
WINDOW REGULATOR SPRING TOOL

Sometimes a window regulator spring will either break or become so weak that it makes it hard to roll up the window. Installing a new spring can be difficult and also dangerous.

Take an old distributor shaft and weld on a T handle made from rod stock. Grind down the slotted end so the slot is only 1/4" deep. Put the regulator in a vise and wind it until the lift arm is all the way up. This is the position in which the spring is least compressed. Hook the outer hook of the spring and insert the tool in the center. Turn the tool to compress the spring until it fits into the slot. Release the tool. Tap the spring into position with a hammer.

Make a T handle by welding on some scrap stock.

If you don't have a welder you can grind two flat spots on opposite sides of the shaft and use a Crescent Wrench.



2021 Club Officers & Committees**President**

Ron Lawson
812-343-2434
ronlaw69@yahoo.com

Vice President

Dennis Meyer
317-736-4066
dmeyer4066@sbcglobal.net

Secretary/Webmaster/Membership

John Prohaska
812-350-8780
modelacolumbus@gmail.com

Treasurer/Tour Master

Phil Sutton
812-336-8672
pgsutton@indiana.edu

Board of Directors

Wayne Arnholt
812-522-1007
aatruckway@aol.com
Tim Diehn
812-374-2882
timdiehn@yahoo.com
Ron Huddleston
812-392-2110
ronswift@frontier.com

Newsletter/Historian

Tim Diehn
812-374-2882
modelacolumbus@gmail.com

Swap Meet Chairman

Larry Morlock
812-371-6628
l.morlock@att.net

Care and Concern Committee

Linda Sullivan
812-523-3674
roadsterman1929@yahoo.com

For more classifieds, check
out our [website](#)

Going Places is the official publication of the Columbus Model A Restorers Club Region and the Columbus Model A Ford Club of America Chapter. The general purpose shall be to encourage the members to acquire, preserve, restore, exhibit and make use of the Model "A" Ford vehicle, model years 1928 through 1931 and all things pertaining to the Model "A" Ford, including literature, technical and historical information and to promote the introduction of ideas and fellowship for the enjoyment of its members.

This publication is mailed or emailed to members and editors of similar publications monthly. Meetings are the second Thursday of the month. We invite members to submit articles containing technical Model A information and other interesting tidbits for publication in this newsletter.

Classifieds



1932 Model B Coupe

For Sale, 1932 Model B Coupe, rumble seat, high compression head. Recently completed restoration with some original rare interior parts preserved.

Call Don Miller
812-939-2779



1929 Model A Roadster

For Sale, 1929 Model A Ford Roadster, Red and Black. Dual side mount spare tires, Model B engine, Weber downdraft carburetor, four speed transmission, high speed differential, new tires. \$15,000.

Call Tom Bruce
317-402-5845

1930 Model A Coupe

For Sale, 1930 Model A Coupe, complete and all original.

Call Don Miller
812-939-2779